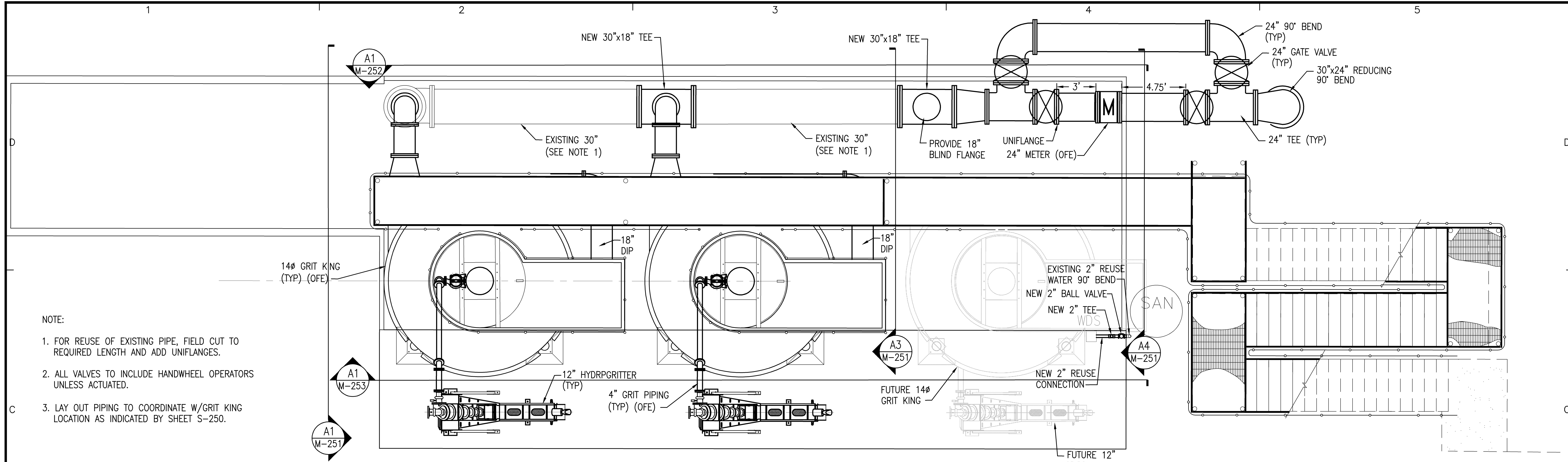
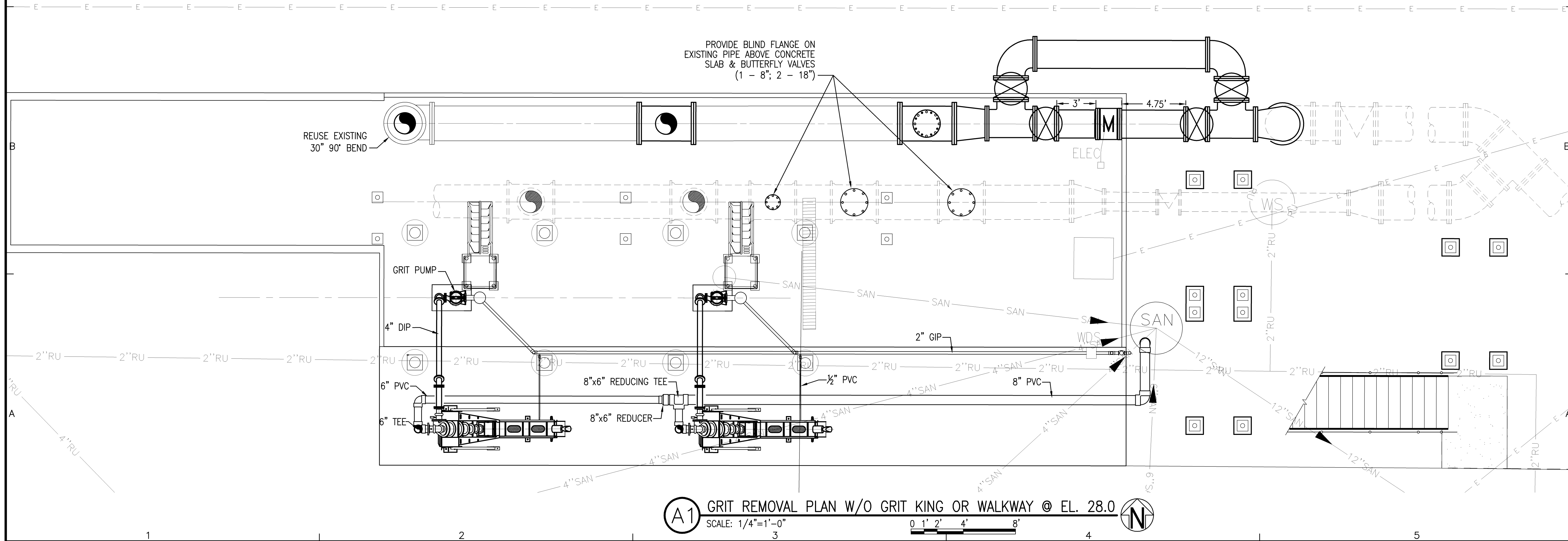


K:\279\27941.05 - Bayou Marcus\DWG\M-250.dwg, Nov 27, 2012 - 11:06:56AM, toverton



- NOTE:
1. FOR REUSE OF EXISTING PIPE, FIELD CUT TO REQUIRED LENGTH AND ADD UNIFLANGES.
 2. ALL VALVES TO INCLUDE HANDWHEEL OPERATORS UNLESS ACTUATED.
 3. LAY OUT PIPING TO COORDINATE W/GRIT KING LOCATION AS INDICATED BY SHEET S-250.

(C1) GRIT REMOVAL PLAN @ EL. 43.50
 SCALE: 1/4"=1'-0" 0 1' 2' 4' 8'



(A1) GRIT REMOVAL PLAN W/O GRIT KING OR WALKWAY @ EL. 28.0
 SCALE: 1/4"=1'-0" 0 1' 2' 4' 8'

BASKERVILLE-DONOVAN, INC. INNOVATIVE INFRASTRUCTURE SOLUTIONS PANAMA CITY ■ PALM BEACH ■ MOBILE 440 WEST MAIN STREET PENSACOLA, FLORIDA 32502 (850) 498-9661 ENGINEERING BUSINESS: EB-0000940	
CHRISTINA L. LEACH, P.E. FL Reg. Engineer #66594	
ECUA BAYOU MARCUS HEADWORKS IMPROVEMENTS ESCAMBIA COUNTY, FLORIDA	
PROJECT NO: 27941.05	REVISION/ACTION TAKEN
DESIGNED BY: CLL DRAWN BY: THO CHK'D BY: CLL PROJ. MGR: RWD DATE: OCTOBER 2012	APPR. _____ DATE _____
GRIT REMOVAL SYSTEM PLAN	NO. _____ DATE _____
M-250	This drawing is the property of BASKERVILLE-DONOVAN, INC. and is not to be reproduced in whole or in part. It is not to be used on any other project without the written consent of Baskerville-Donovan, Inc.
NOT RELEASED FOR CONSTRUCTION	DATE _____ BY _____