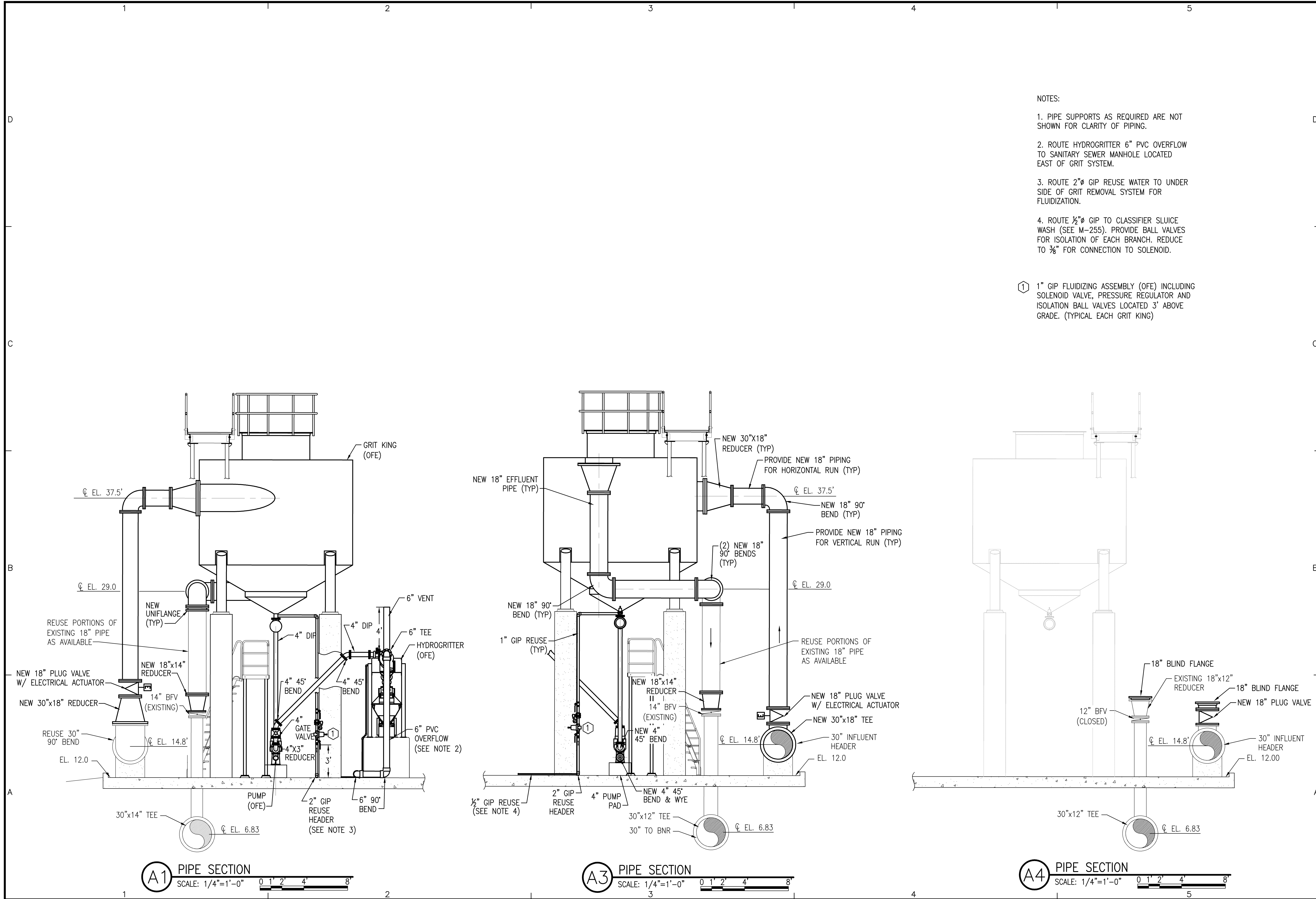


K:\279\27941.05 - Bayou Marcus\DWG\M-250.dwg, Nov 27, 2012 - 11:08:54AM, toverton



NOTES:

1. PIPE SUPPORTS AS REQUIRED ARE NOT SHOWN FOR CLARITY OF PIPING.
2. ROUTE HYDROGRITTER 6" PVC OVERFLOW TO SANITARY SEWER MANHOLE LOCATED EAST OF GRIT SYSTEM.
3. ROUTE 2" GIP REUSE WATER TO UNDER SIDE OF GRIT REMOVAL SYSTEM FOR FLUIDIZATION.
4. ROUTE 1/2" GIP TO CLASSIFIER SLUICE WASH (SEE M-255). PROVIDE BALL VALVES FOR ISOLATION OF EACH BRANCH. REDUCE TO 3/8" FOR CONNECTION TO SOLENOID.

① 1" GIP FLUIDIZING ASSEMBLY (OFE) INCLUDING SOLENOID VALVE, PRESSURE REGULATOR AND ISOLATION BALL VALVES LOCATED 3' ABOVE GRADE. (TYPICAL EACH GRIT KING)

A1 PIPE SECTION
SCALE: 1/4"=1'-0"

A3 PIPE SECTION
SCALE: 1/4"=1'-0"

A4 PIPE SECTION
SCALE: 1/4"=1'-0"

NO.	DATE	APPR.	REVISION/ACTION TAKEN

This drawing is the property of BASKERVILLE-DONOVAN, INC. and is not to be reproduced in whole or in part. It is not to be used on any project without the written request of BASKERVILLE-DONOVAN, INC.

PROJECT NO:	27941.05
DESIGNED BY:	CLL
DRAWN BY:	THO
CHK'D BY:	CLL
PROJ. MGR:	RWD
DATE:	OCTOBER 2012

GRIT REMOVAL SYSTEM SECTIONS