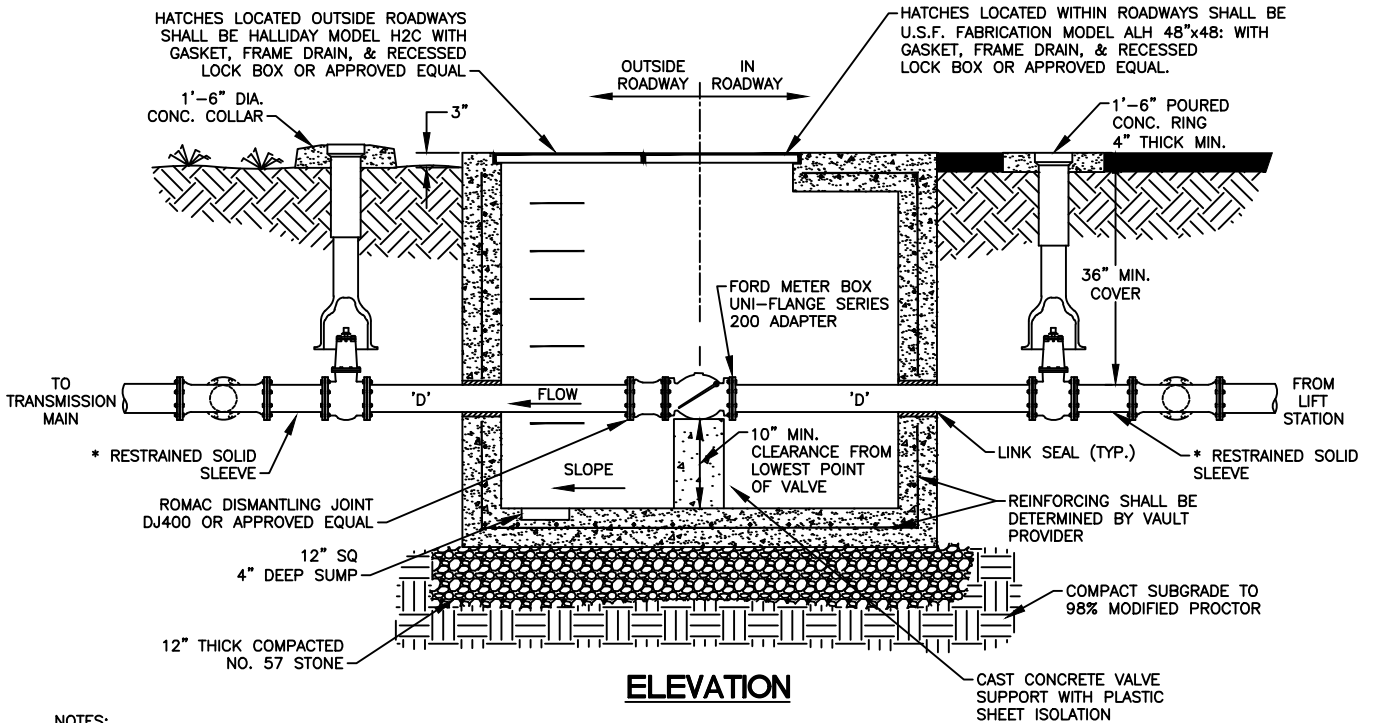


**PLAN**



**ELEVATION**

**NOTES:**

1. VAULT & HINGED HATCH DESIGNED FOR H-20 LOAD RATING. (CONTINUOUS LOADING IN ROADWAYS, OCCASIONAL LOADING OUTSIDE ROADWAYS).
2. HINGED HATCH FOR OUTSIDE ROADWAY TO MATCH 'X' & 'Y' DIMENSIONS UNLESS OTHERWISE INDICATED.
3. ALL EXPOSED FASTENING HARDWARE & TIE RODS SHALL BE 316 S.S.
4. EARTH UNDER FLANGE OF VALVE BOX & COLLAR TO BE FIRM AND WELL TAMPED TO ENSURE AGAINST VALVE BOX SETTLING.
5. CHECK VALVE DESIGN PRESSURES:
  - A. OPERATING = \_\_\_ PSI
  - B. MAXIMUM BACK PRESSURE = \_\_\_ PSI
6. MANHOLE STEPS SHALL NOT BE LOCATED ON THE SAME SIDE AS HATCH HINGE.
7. IN SPECIAL CASES, THE BYPASS PIPING MAY BE ELIMINATED ON 4" AND 6" FORCE MAINS, SUBJECT TO APPROVAL BY ECUA.
8. PIPE PENETRATIONS SHALL BE MADE USING A LINK-SEAL MODULAR SEAL SYSTEM AS MANUFACTURED BY GPT INDUSTRIES OR APPROVED EQUAL.

LINE SIZE ('D')	LENGTH ('X')	WIDTH ('Y')
4" & 6"	54"	48"
8"	60"	48"
10"	72"	48"
12"	72"	60"
16"	84"	60"
20"	84"	78"



SCALE: N.T.S.  
DATE: 9/01/2016

**SEWER CHECK VALVE VAULT DETAIL**

DETAIL

**D-23**