

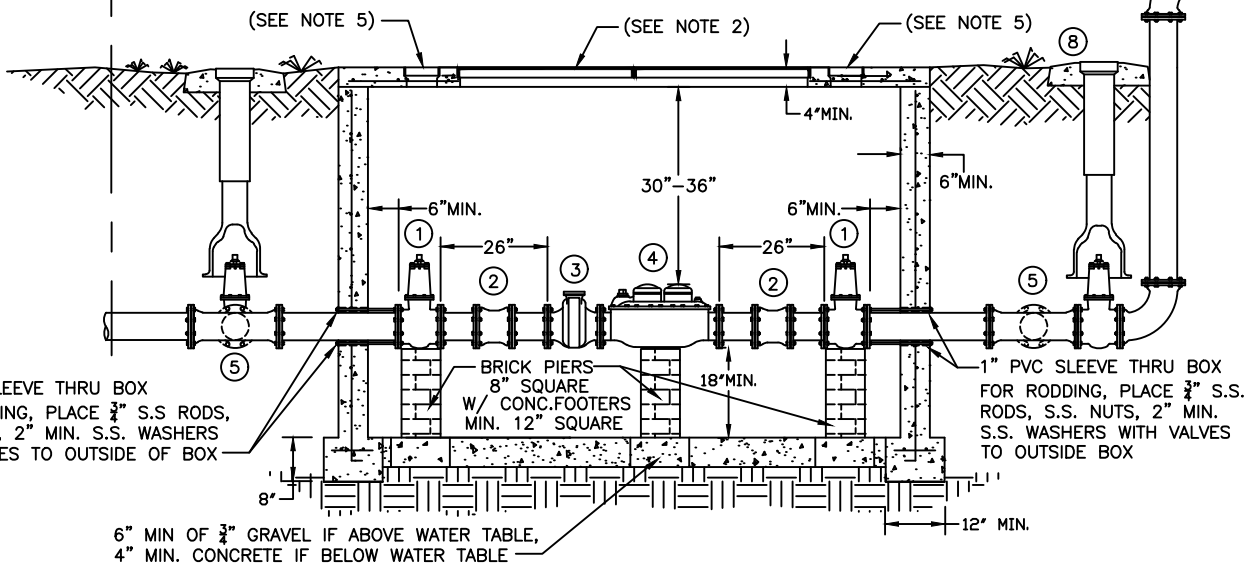
NOTES:

- 1.) METER VAULTS ARE TYPICALLY PLACED IN AN EASEMENT ON PRIVATE PROPERTY ABUTTING ROW LINE (SEE ECUA ENGINEERING FOR INFORMATION). METER SHALL NOT BE FENCED IN.
- 2.) ALUMINUM OR GALVANIZED STEEL ANGLE FRAME HATCH WITH ALUMINUM DOUBLE COVER. SIZE 36" X 48" FOR 2" METER VAULTS OR 36" X 72" FOR 3" AND LARGER METER VAULTS. NO CENTER BAR, DOORS HINGED ON OPPOSITE SHORT SIDE AND OPEN TO 90 DEGREES OR MORE. TYPE AHD FOR INCIDENTAL H2O RATED TRAFFIC, OR TYPE APD FOR 300 POUND RATED PEDESTRIAN USE.
- 3.) BYPASS PIPING FOR 2" METERS MAY BE INTERNAL. INTERNAL 2" BYPASS PIPING SHALL BE BRASS. BYPASS PIPING FOR 3" AND 4" METERS SHALL BE EXTERNAL. ALL EXTERNAL BYPASS PIPING SHALL BE PVC OR DUCTILE IRON. HDPE BYPASS PIPING NOT ALLOWED.
- 4.) METER RUN PIPING SHALL BE BRASS FOR 2" METERS AND SHALL BE DUCTILE IRON FOR 3" AND 4" METERS.
- 5.) VALVE BOXES ARE REQUIRED FOR 3" AND 4" METERS; VALVE BOXES ARE NOT REQUIRED FOR 2" METERS.
- 6.) TO BACKFLOW PREVENTION DEVICE (NOT SHOWN) AS INSTALLED BY OWNER.

METER SIZE	METER BOX (INSIDE DIMENSIONS)	
	A	B
2"	6'6"	4'6"
3" & 4"	9'0"	5'0"

LEGEND

- ① M.J. GATE VALVE (3" OR LARGER) OR WHEEL VALVE (2" ONLY)
- ② 12" SOLID SLEEVE (3" & LARGER) OR DRESSER COUPLING (2" ONLY)
- ③ STRAINER (BY ECUA)
- ④ METER (BY ECUA)
- ⑤ M.J. TEE
- ⑥ M.J. ELBOW 90°
- ⑦ M.J. GATE VALVE & BOX
- ⑧ OWNER CONTROL GATE VALVE



1" PVC SLEEVE THRU BOX FOR RODDING, PLACE 3/8" S.S. RODS, S.S. NUTS, 2" MIN. S.S. WASHERS WITH VALVES TO OUTSIDE OF BOX

BRICK PIERS 8" SQUARE W/ CONC. FOOTERS MIN. 12" SQUARE

1" PVC SLEEVE THRU BOX FOR RODDING, PLACE 3/8" S.S. RODS, S.S. NUTS, 2" MIN. S.S. WASHERS WITH VALVES TO OUTSIDE BOX

6" MIN OF 3/4" GRAVEL IF ABOVE WATER TABLE, 4" MIN. CONCRETE IF BELOW WATER TABLE



SCALE: N.T.S.
DATE: 9/01/2016

2", 3" & 4" METER VAULT

DETAIL

D-44