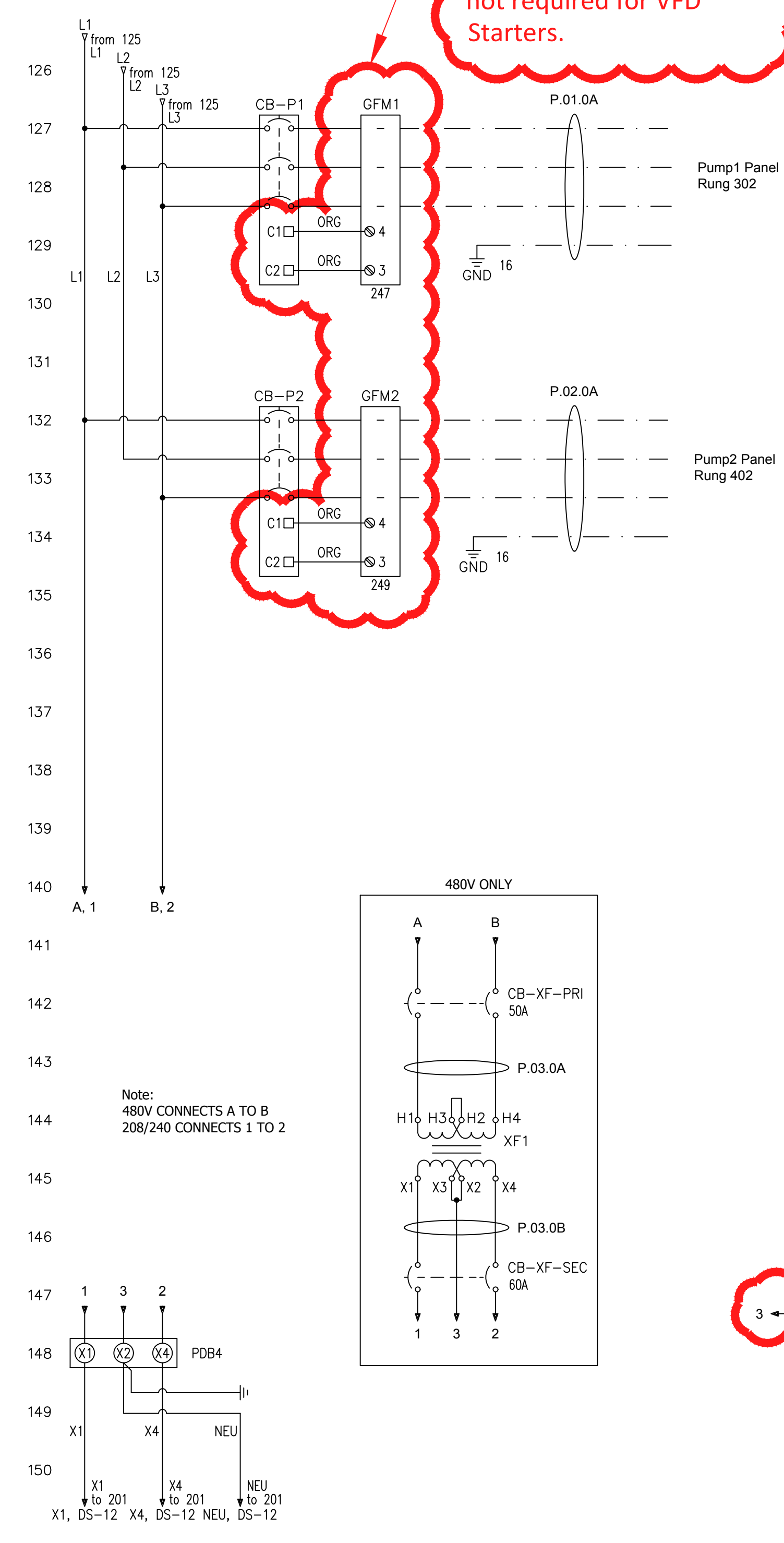


Instructions:
This sheet includes the Power Distribution Schematic. Select either Feeder Option 1, this sheet or Feeder Option 2-5, Sheet DS-12.2, and insert into ladder rungs 101-110, this sheet, to complete power distribution schematic.

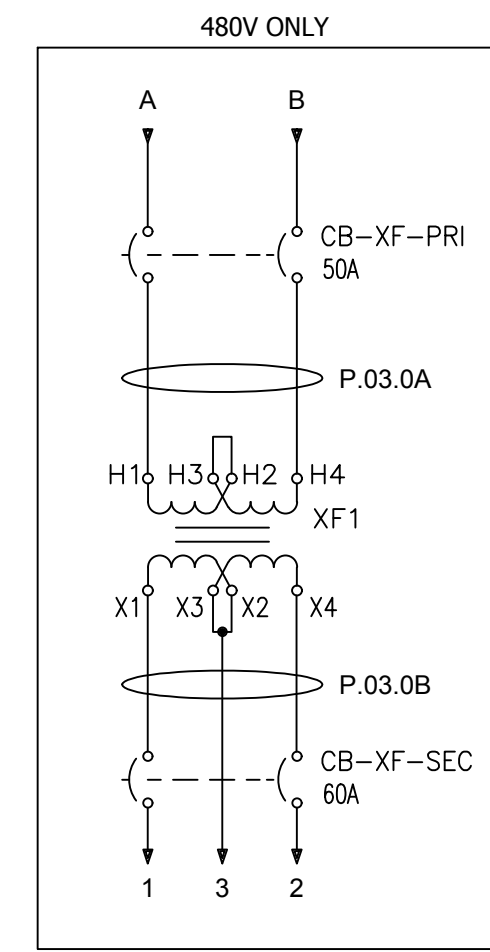
Instructions:
For Feeder Option 1, include this neutral block for 208/240V, not required for 480V.

Instructions:
Include this neutral block for 208/240V, not required for 480V.



Instructions:
Include this schematic for FVNR and RVSS Starters, not required for VFD Starters.

Instructions:
Include this neutral block for 208/240V, not required for 480V.



Note: 480V CONNECTS A TO B
208/240 CONNECTS 1 TO 2

SEE NOTE #10 ON SHEET DS-0.1

