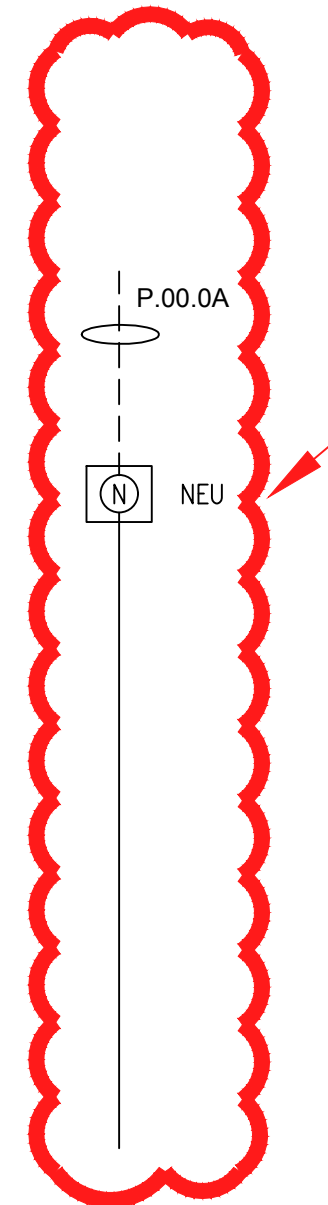
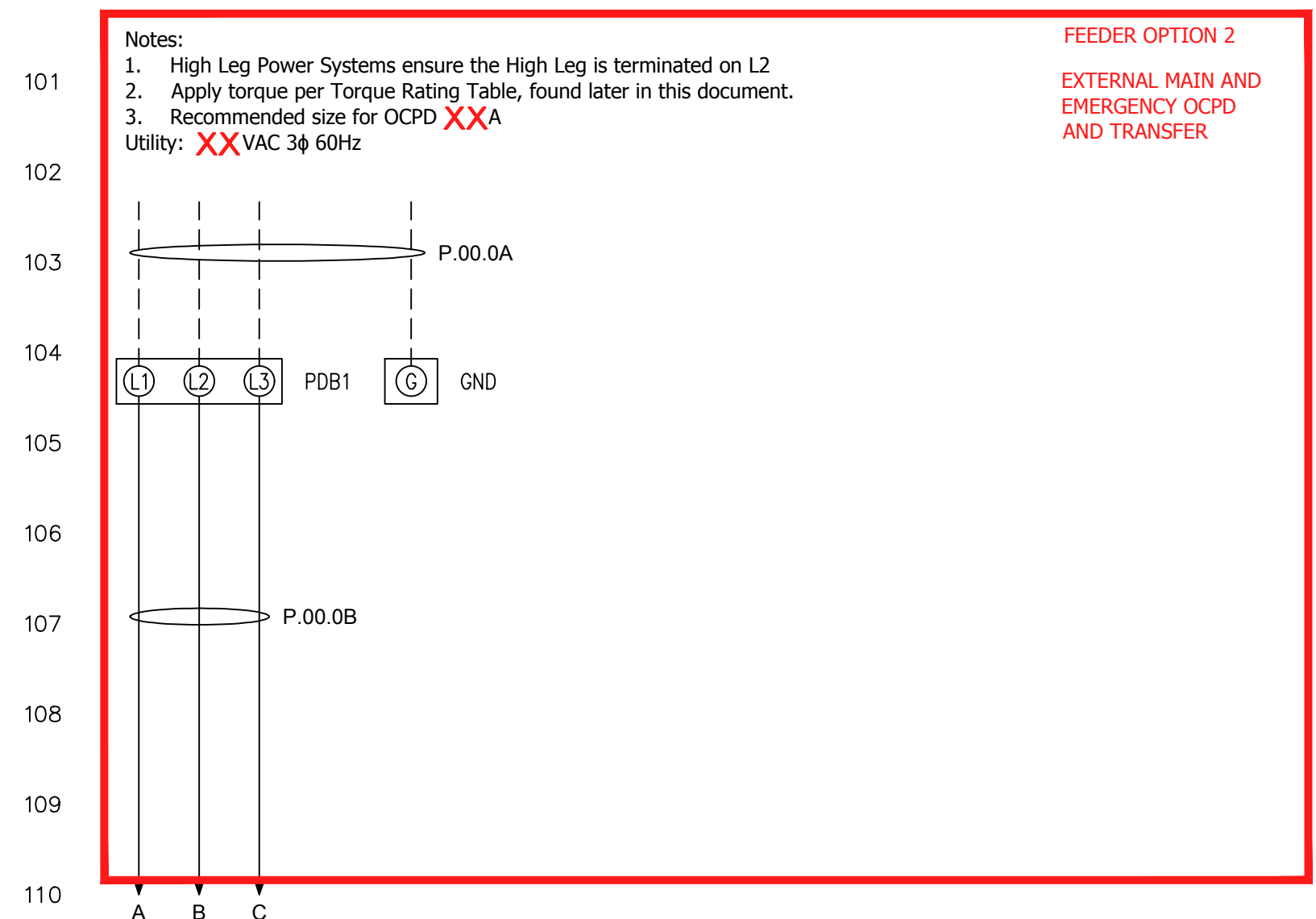
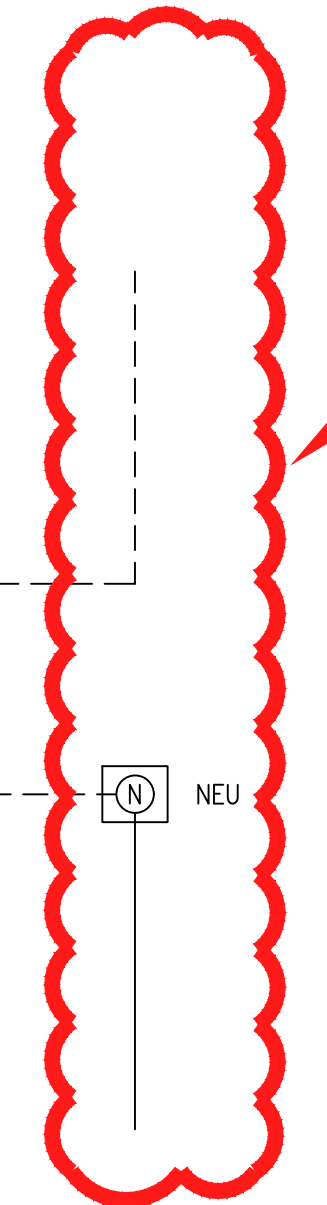
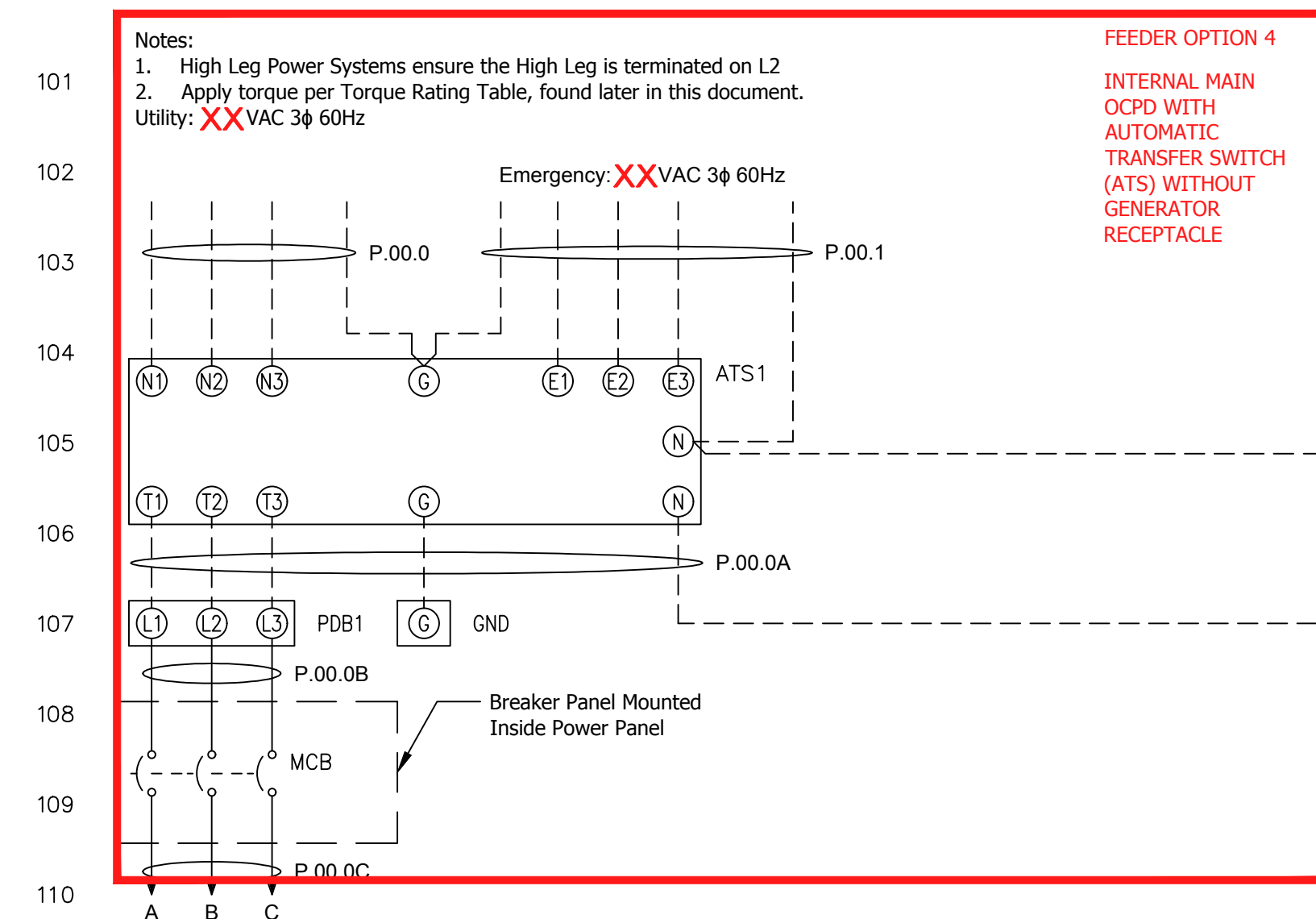


Power Feeder Circuit Options 2-5.dwg

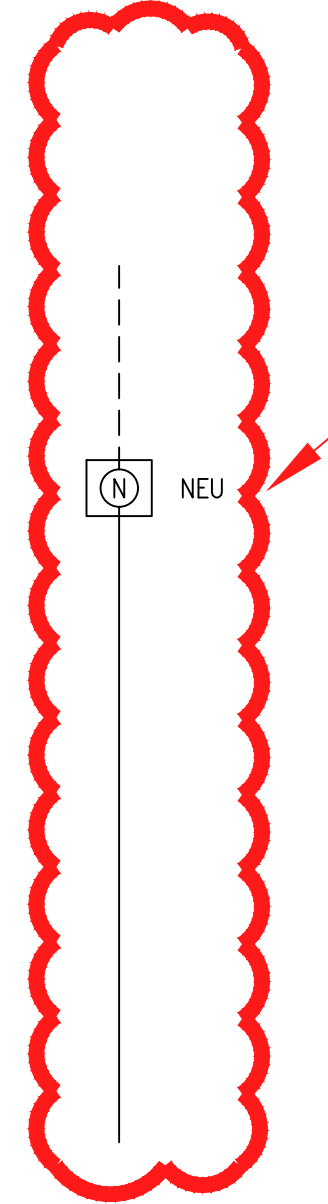
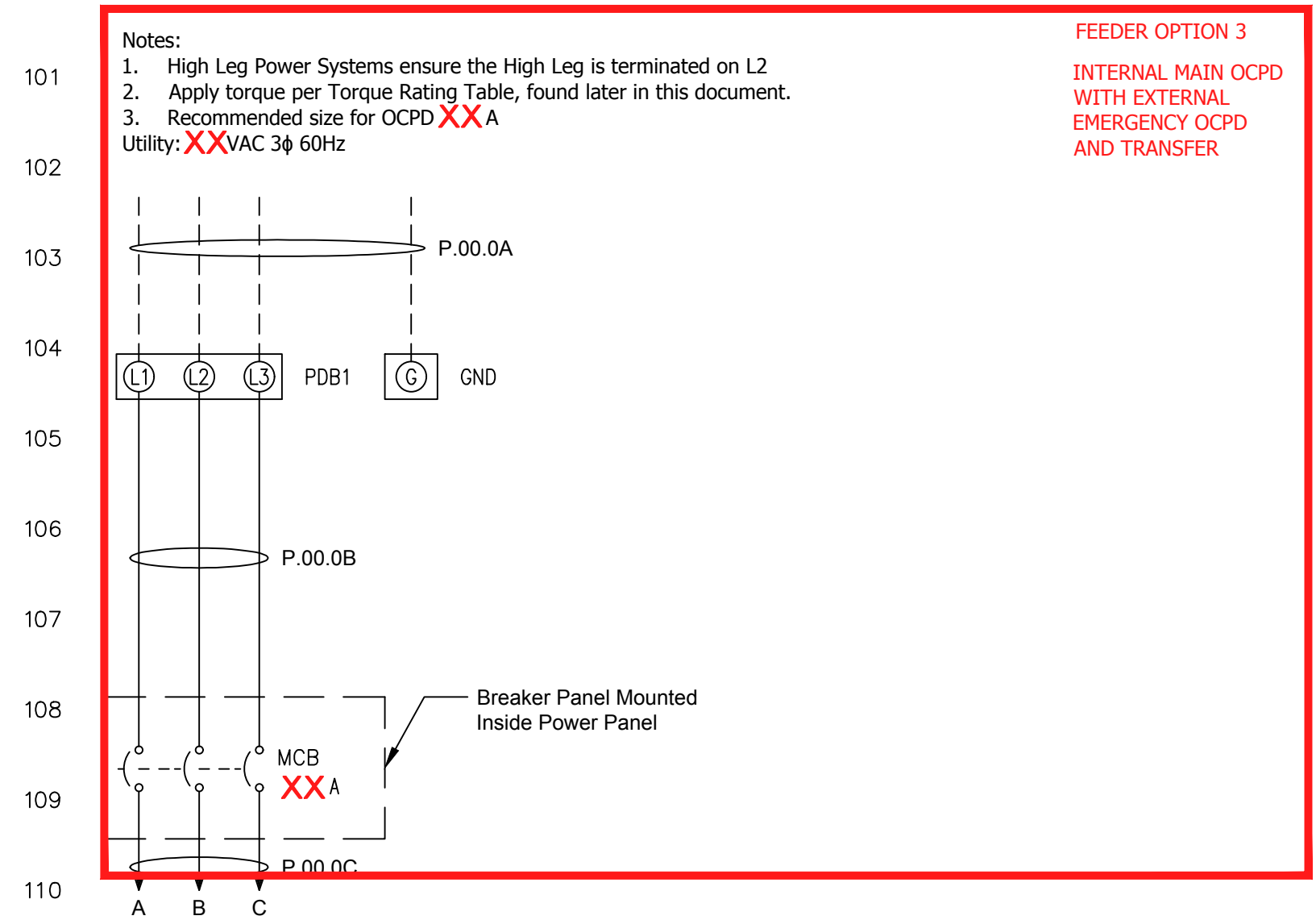
Instructions:
This sheet includes the Power Distribution Schematic Feeder Options 2-5.



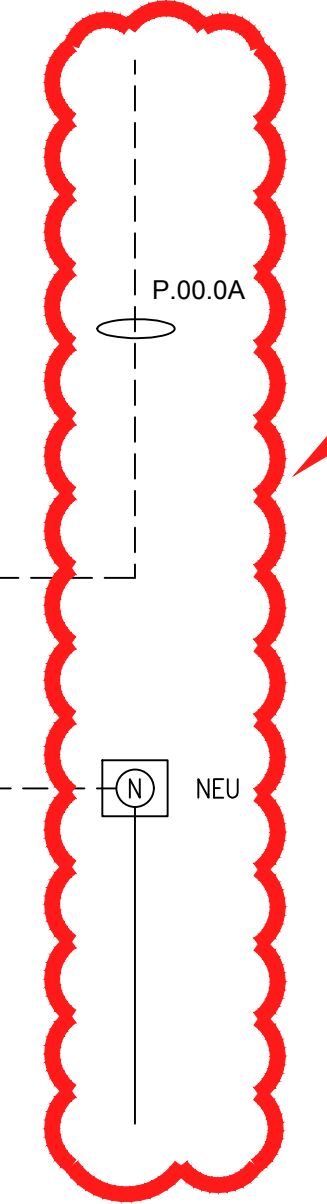
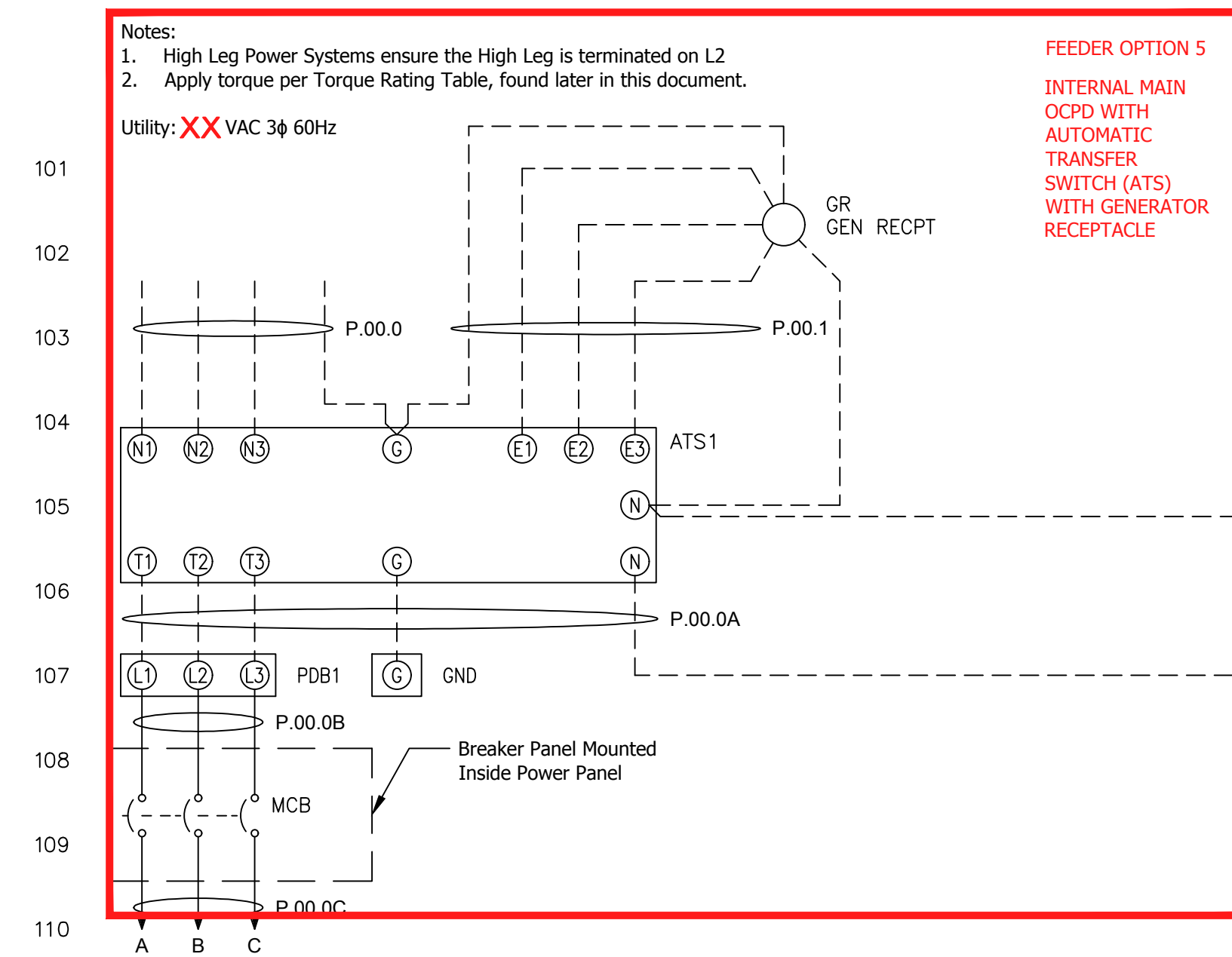
Instructions:
For Feeder Option 2, include this neutral block for 208/240V, not required for 480V.



Instructions:
For Feeder Option 4, include this neutral block for 208/240V, not required for 480V.



Instructions:
For Feeder Option 3, include this neutral block for 208/240V, not required for 480V.



Instructions:
For Feeder Option 5, include this neutral block for 208/240V, not required for 480V.

SEE NOTE #10 ON SHEET DS-0.1



SHEET NO.
DS-12.2

DATE: 9/01/2016